

1.0 Ghz Antenna Unit

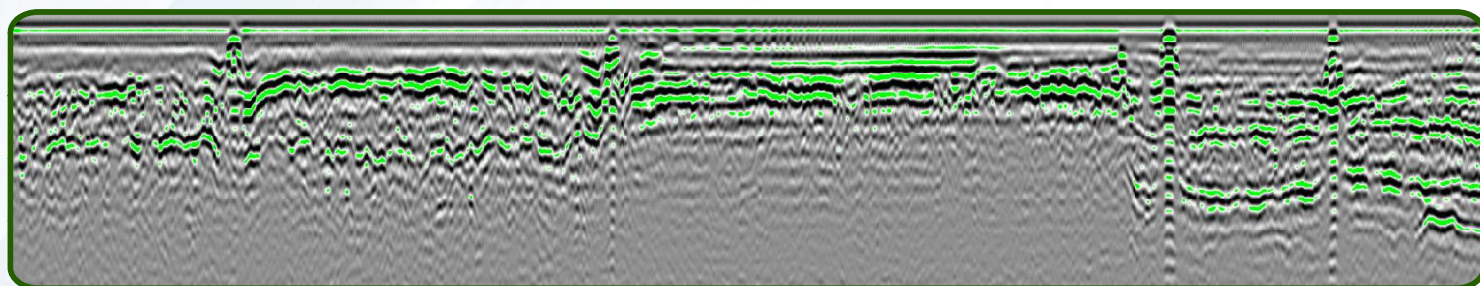
SHIELDED, AIR LAUNCHED



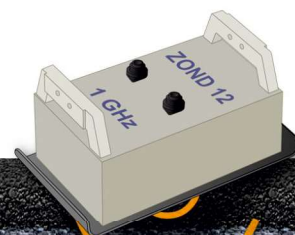
Shielded air launched **1.0 GHz** antenna unit is general purpose antenna with coupled transmitting and receiving antennas in strong housing, designed for shallow penetration depth, roads inspection and concrete profiling. Antenna operates from surface and lifted position up to 10 cm above the ground.

System Advantages

- **Central frequency:** 1.0 GHz
- **Dimensions:** 25x17x10 cm
- **Weight:** 2.1 kg
- **Power:** 0.25 A @ 12 V DC by cable from control unit
- **Transmitter output:** 100 V
- **Resolution:** 10 cm in asphalt
- **Speed:** 60 km/h @ 5 cm per scan



Sounding of asphalt pavement



Darzauglu str. 1-105, Riga, Latvia, LV1012
+371 67141041
radsys@radsys.lv
www.radsys.lv