

100 MHZ Antenna System

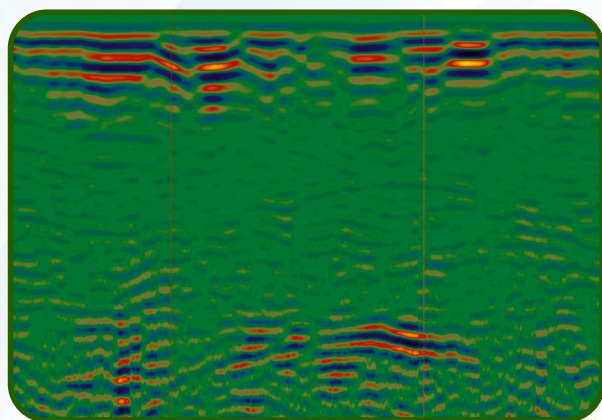
SHIELDED, SURFACE COUPLED



Surface coupled **100 MHZ** antenna system with separated transmitting and receiving antennas is the lowest frequency shielded antenna. Antenna could be used for stepped, continuous and CDP data collection modes.

Antenna System Advantages

- **Central frequency:** 100 MHz
- **Dimensions:** 93x65x21 cm each
- **Weight:** 13 kg each
- **Power:** 0.35 A @ 12 V DC by cable from control unit
- **Transmitter output:** 400 V
- **Receiver sensitivity:** 50 μ V



Detection of a railroad tunnel at 15 m depth, in a limestone rock covered with 2 m of loam



Darzauglu str. 1-105, Riga, Latvia, LV1012
+371 67141041
radsys@radsys.lv
www.radsys.lv