

# 900 MHZ Antenna Unit

SHIELDED, SURFACE COUPLED

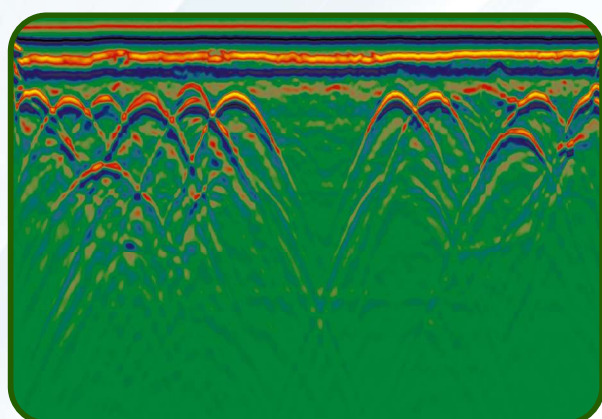
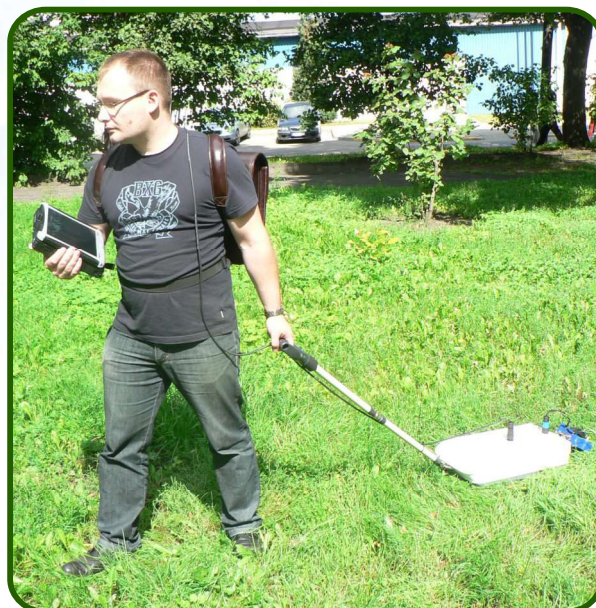


Surface coupled **900 MHZ** antenna unit is general purpose antenna with coupled transmitting and receiving antennas in strong housing designed for shallow penetration depth and utility detection.

Antenna could be used for stepped, continues and CDP (in combination with another antenna) data collection modes.

## Antenna Unit Advantages

- **Central frequency:** 900 MHZ
- **Dimensions:** 52x24x12 cm
- **Weight:** 4 kg
- **Power:** 0.35 A @ 12 V DC by cable from control unit
- **Transmitter output:** 400 V
- **Receiver sensitivity:** 50  $\mu$ V



Pipes and cables detection



Darzauglu str. 1-105, Riga, Latvia, LV1012  
+371 67141041  
radsys@radsys.lv  
www.radsys.lv