

# 1.5 Ghz Antenna Unit

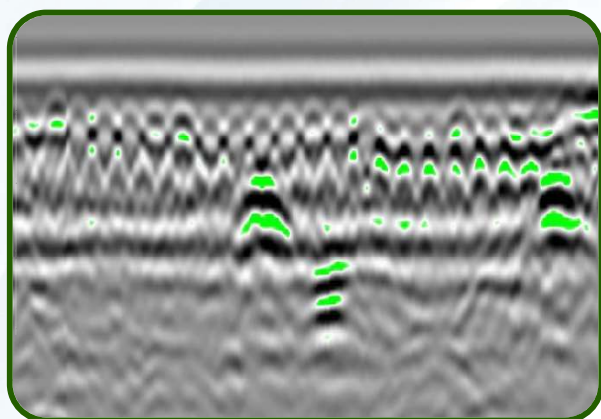
SHIELDED, AIR LAUNCHED



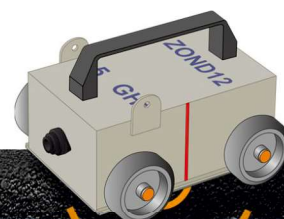
Shielded air launched coupled **1.5 GHz** antenna unit is general purpose antenna with coupled transmitting and receiving antennas in strong housing with built-in odometer wheel, designed for shallow penetration depth, walls, floors, roads, bridges inspection and bricks, concrete profiling with 5-7 cm resolution\* in concrete.

## System Advantages

- **Central frequency:** 1.5 GHz
- **Dimensions:** 27x23x15 cm
- **Weight:** 2.4 kg
- **Power:** 0.25 A @ 12 V DC by cable from control unit
- **Transmitter output:** 100 V
- **Resolution:** 5 cm in asphalt
- **Receiver sensitivity:** 120  $\mu$ V



Sounding of concrete floor



Darzauglu str. 1-105, Riga, Latvia, LV1012  
+371 67141041  
radsys@radsys.lv  
www.radsys.lv