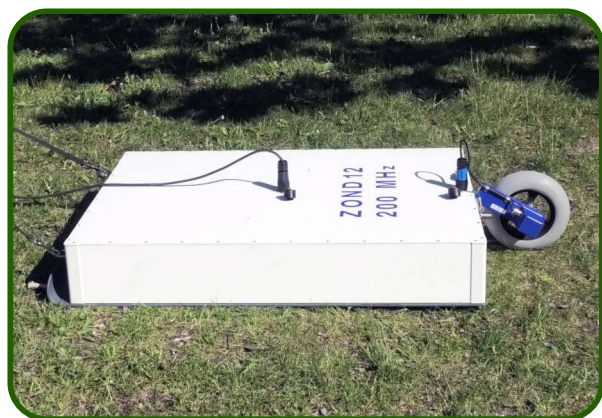


200 MHZ Antenna System

SHIELDED, SURFACE COUPLED

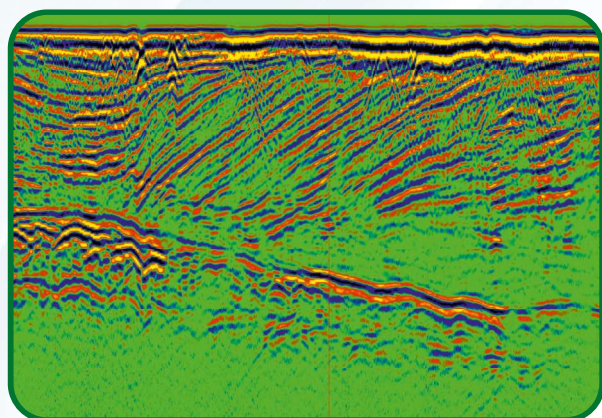


Surface coupled **200 MHZ** antenna unit is general purpose antenna with coupled transmitting and receiving antennas in strong housing designed for middle penetration depth.

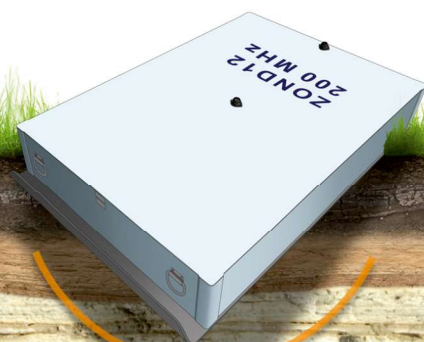
Antenna could be used for stepped, continues and CDP (in combination with another antenna) data collection modes..

Antenna System Advantages

- **Central frequency:** 200 MHZ
- **Dimensions:** 96x62x14 cm each
- **Weight:** 16 kg
- **Power:** 0.35 A @ 12 V DC by cable from control unit
- **Transmitter output:** 400 V
- **Receiver sensitivity:** 50 μ V



Sandy hill stratigraphy detection up to the 17 m depth



Darzauglu str. 1-105, Riga, Latvia, LV1012
+371 67141041
radsys@radsys.lv
www.radsys.lv