

300 MHZ Antenna Unit

SHIELDED, SURFACE COUPLED

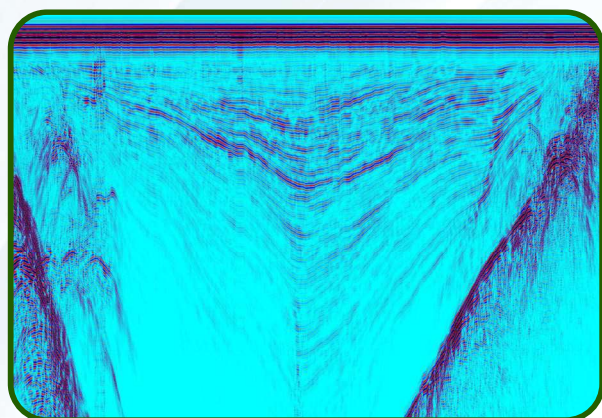


Surface coupled **300 MHZ** antenna unit is general purpose antenna with coupled transmitting and receiving antennas in strong housing designed for middle penetration depth.

Antenna could be used for stepped, continues and CDP (in combination with another antenna) data collection modes.

Antenna Unit Advantages

- **Central frequency:** 300 MHZ
- **Dimensions:** 102x53x12 cm
- **Weight:** 11 kg
- **Power:** 0.35 A @ 12 V DC by cable from control unit
- **Transmitter output:** 400 V
- **Receiver sensitivity:** 50 μ V



Sounding of Elbrus mountain glacier at 5600m above the see level



Darzauglu str. 1-105, Riga, Latvia, LV1012
+371 67141041
radsys@radsys.lv
www.radsys.lv