

750 MHZ Antenna System

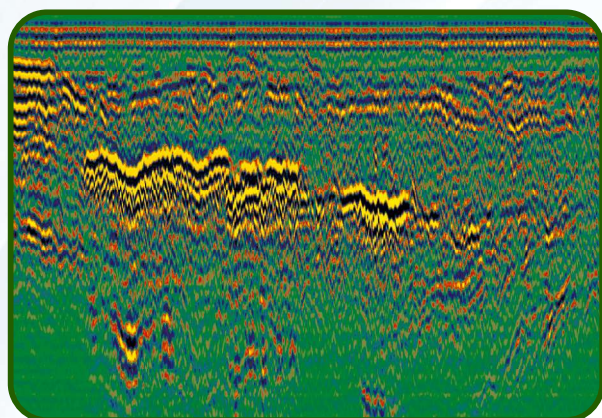
SHIELDED, AIR COUPLED



Air coupled **750 MHZ** antenna system with separated transmitting and receiving antennas designed for railroad embankment inspection. Antenna could be used for stepped, continues and CDP (in combination with another antenna) data collection modes.

Antenna System Advantages

- **Central frequency:** 750 MHZ
- **Dimensions:** 35x20x15 cm each
- **Weight:** 2 kg each
- **Power:** 0.25 A @ 12 V DC by cable from control unit
- **Transmitter output:** 200 V
- **Receiver sensitivity:** 50 μ V



Railways embankment profiling



Darzauglu str. 1-105, Riga, Latvia, LV1012
+371 67141041
radsys@radsys.lv
www.radsys.lv